



**Rexroth**  
Bosch Group  
Sales Partner

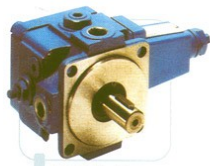


**PRESSFORM INDUSTRIES**  
Dealers for **Bosch-Rexroth** India Ltd.

HYDRAULIC ELEMENTS



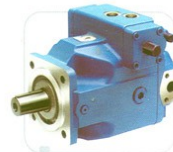
External Gear Pumps



Variable Vane Pump



Bent Axis Pump



Variable Displacement Piston Pump



Pressure Relief Valves



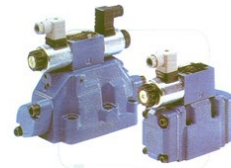
Pilot Operated Pressure Control Valve



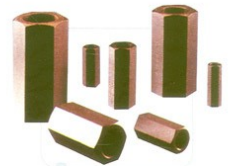
Direction Control Valves

**Rexroth**  
Bosch Group

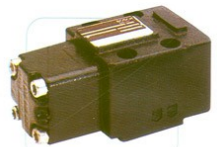
Range of  
Hydraulic  
Elements



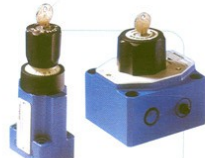
Pilot Operated DC Valves  
NG10, NG16, NG25, NG32



Check Valves



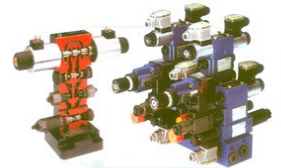
Pilot Operated Check Valve



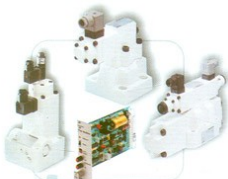
Flow Control Valves



Cartridge Valves



Modular Valves- NG6, NG10



Proportional Valves & Cards



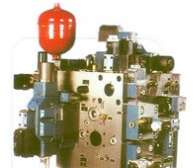
Pressure Switches



Mobile Control Valve

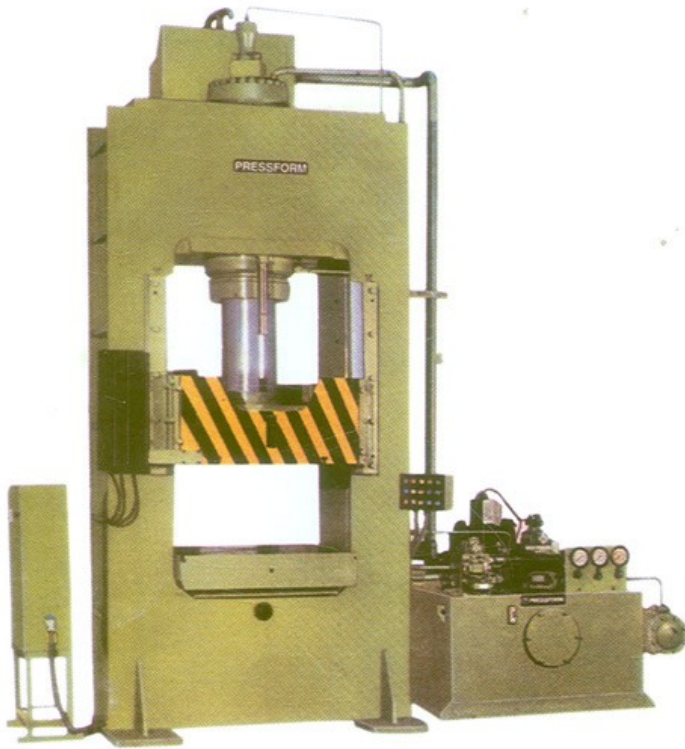


Accumulators



Press Block

# About Us

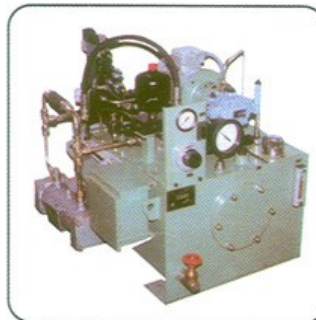


Pressform Industries, established in 1987 is committed to serve the hydraulic industry. Pressform Industries manufactures Presses from 5 Tonnes to 700 Tonnes capacity for various applications like Sheet Metal Forming, Deep Drawing, Cold Forging, Diamond Tools, Rubber Moulding, Compression Moulding, Assembly and Special Purpose Machines as per standard specifications and as per customer requirements.

Pressform Industries also manufactures Power Packs and Cylinders.

*Pressform Industries is also an Authorised Dealer for Bosch-Rexroth India Ltd., for their entire range of Hydraulic Elements.*

- **PRESSES** available in  
CLOSED FRAME,  
C-FRAME &  
PILLAR TYPE Constructions
- **HYDRAULIC CYLINDERS** available in  
TIE-ROD,  
WELDED &  
BOLTED constructions with  
BORE SIZE : 40 TO 560 mm.  
STROKE : 1500 mm.  
WORKING Pr. : 300KG/SQ.CM(MAX)
- **HYDRAULIC POWER PACKS**



## PRESSFORM INDUSTRIES

19-B, Yadavallar Street, Patravakkam, Chennai - 600 098.

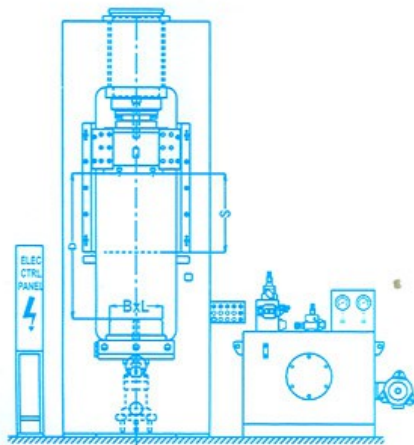
Phone: 91 44 2624 1789 / 2635 9299

Fax: 91 44 2625 0736

E-mail: [presform@dataone.in](mailto:presform@dataone.in); [pressform\\_1987@yahoo.com](mailto:pressform_1987@yahoo.com)



## COLD FORGING PRESS - PSCFP



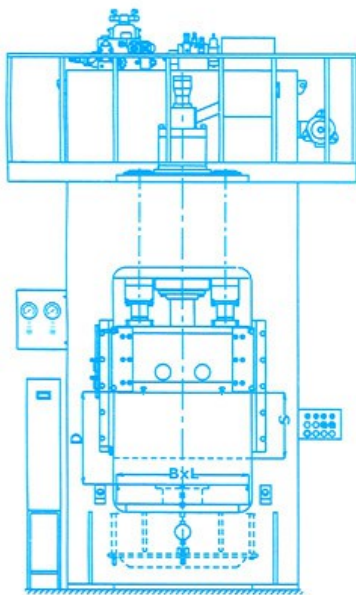
COLD FORGING PRESS

MODEL CODE		PSCFP 100	PSCFP 150	PSCFP 200	PSCFP 300	PSCFP 400	PSCFP 600
CAPACITY	TONNES	100	150	200	300	400	600
STROKE	S mm	300	300	400	400	500	500
DAYLIGHT	D mm	500	600	700	800	1100	1000
TABLE & RAM PLATE SIZE	B x L mm	400 x 400	400 x 500	500 x 600	600 x 700	700 x 700	1000 x 800
POWER	H.P	10	20	30	40	40	75

### SPEEDS

APPROACH	mm/sec	40	50	50	50	60	125
PRESSING	mm/sec	5	8	9	8	5	7.5
RETURN	mm/sec	40	50	50	50	80	100
MAX. OP. Pr.	Kg/Sq. cm	200	200	250	250	200	240

## DOUBLE ACTION PRESS



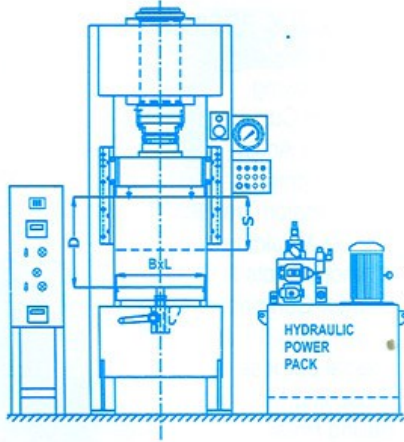
DOUBLE ACTION PRESS

MODEL CODE		PSDDP 125	PSDDP 250	PSDDP 400
CAPACITY (TOTAL)	TONNES	125	250	400
PRESSING	TONNES	65	125	200
BLANK HOLDING	TONNES	60	125	200
STROKE	mm	600	600	800
TABLE & RAM PLATE SIZE	B x L mm	900 x 900	1000 x 1000	1100 x 1100
DAY LIGHT	D mm	700	800	1000
BORE IN TABLE	mm	350	450	500
BORE IN SLIDE	mm	400	500	550
POWER	H.P	25	50	60

### SPEEDS

APPROACH	mm/sec	65	70	70
PRESSING	mm/sec	18	20	18
RETURN	mm/sec	110	100	100

## COMPRESSION MOULDING PRESS - PSCMP



MODEL CODE		PSCMP 40	PSCMP 60	PSDDP 100	PSCMP150	PSCMP 200
CAPACITY	TONNES	40	60	100	150	200
STROKE	S mm	300	300	300	300	400
DAYLIGHT	D mm	500	600	600	700	800
TABLE & RAM PLATE SIZE	B x L mm	400 x 400	500X 500	600 x 600	700 x 700	700 x 700
POWER	H.P	3	5	7.5	7.5	10

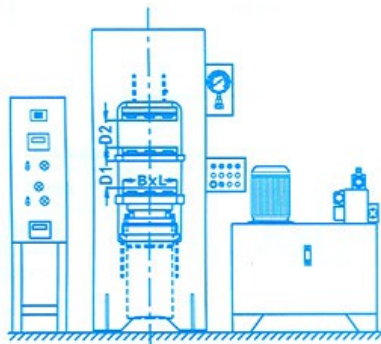
### SPEEDS

APPROACH	mm/sec	45	45	40	60	50
PRESSING	mm/sec	5	5	5	3	3
RETURN	mm/sec	60	60	40	60	50
MAX. OP. Pr.	Kg/Sq. cm	160	160	200	250	250

## COMPRESSION MOULDING PRESS

OPTION : EJECTOR I) MANUAL II) HYDRUALIC

## RUBBER MOULDING PRESS - PSRMP



MODEL CODE		PSRMP 25	PSRMP 40	PSRMP 60	PSRMP 100
CAPACITY	TONNES	25	40	60	100
STROKE	S mm	200	200	200	300
DAYLIGHT	D mm	200	200	200	300
TABLE & RAM PLATE SIZE	B x L mm	12" x 12"	16" x 16"	18" x 18"	24" x 24"
POWER	H.P	3	3	5	7.5

### SPEEDS

APPROACH	mm/sec	30	30	25	25
PRESSING	mm/sec	3	3	4	4
RETURN	mm/sec	GRAVITY	GRAVITY	GRAVITY	GRAVITY
RAM SIZE	DIA	140	160	200	250

## RUBBER MOULDING PRESS

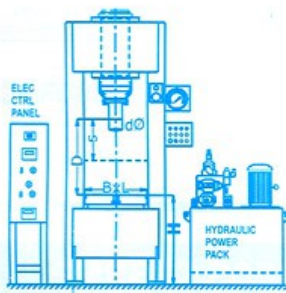
OPTION : MULTI DAYLIGHT

## H-FRAME PRESS -PSHP

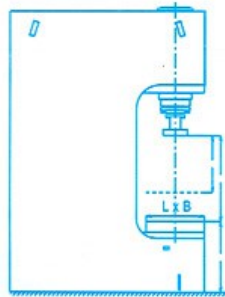
MODEL CODE		PSHP 6	PSHP 10	PSHP 25	PSHP 40	PSHP 60	PSHP 100
CAPACITY	TONNES	6.0	10	25	40	60	100
STROKE	S mm	250	200	300	300	300	300
DAYLIGHT	D mm	400	500	500	500	500	500
TABLE SIZE	L x B mm	400 x 400	500 x 500	500 x 500	500 x 500	600 x 500	700 x 500
HOLE DIA	d mm	20	25	25	40	40	40
HEIGHT OF TABLE FROM FLOOR	H mm	800	800	800	800	800	800
POWER	H.P	5	5	7.5	7.5	10	10

### SPEEDS

APPROACH	mm/sec	50	30	40	40	40	40
PRESSING	mm/sec	45	25	8	8	7	5
RETURN	mm/sec	100	50	60	60	50	40
MAX. OP. Pr.	Kg/Sq. cm	130	130	160	160	160	200



H-FRAME PRESS



C-FRAME PRESS

## C-FRAME PRESS -PSCP

MODEL CODE		PSCP2.5	PSCP 6.0	PSCP 10	PSCP 25	PSCP 40	PSCP 60
CAPACITY	TONNES	2.5	6.0	10	25	40	60
STROKE	S mm	200	250	250	300	300	300
DAYLIGHT	D mm	350	400	500	500	500	500
TABLE SIZE	L x B mm	300 x 300	400 x 400	500 x 500	500 x 500	500 x 500	600 x 500
RAM PLATE	R x P mm	-	200 x 200	250 x 250	250 x 250	250 x 250	300 x 300
HEIGHT OF TABLE FROM FLOOR	H mm	800	800	800	800	800	800
THROAT	T mm	200	250	250	300	300	300
POWER	H.P	3	5	5	7.5	7.5	10

### SPEEDS

APPROACH	mm/sec	50	50	30	40	40	40
PRESSING	mm/sec	45	45	25	8	8	7
RETURN	mm/sec	100	100	50	60	60	50
MAX. OP. Pr.	Kg/Sq. cm	130	130	130	160	160	160

## OUR PRODUCT RANGE

### MANUFACTURING

1. **HYDRAULIC PRESSES**  
for Applications like:-
  - a) Deep Drawing
    - i) Bottom Cushion,
    - ii) Double Action
  - b) Cold Forging
  - c) Compression Transfer Moulding
  - d) Rubber Moulding
  - e) Diamond Tools & Grinding Wheel
  - f) Powder Compacting
  - g) Assembling & Forming for special purposes
  - h) Broaching Machine
  - i) Bailing Press for paper, steel scrap, coil pith etc.

IN

**CLOSED FRAME**

**C-FRAME**

**PILLAR TYPE** Constructions

CAPACITY - 5T TO 700 Tonnes

2. **HYDRAULIC CYLINDER** in TIE-ROD, WELDED, BOLTED constructions.

BORE SIZE : 40 TO 560 mm.

STROKE : 1500 mm.

WORKING Pr. : 300KG/SQ.CM(MAX)

3. **HYDRAULIC POWER PACKS**

## TRADING

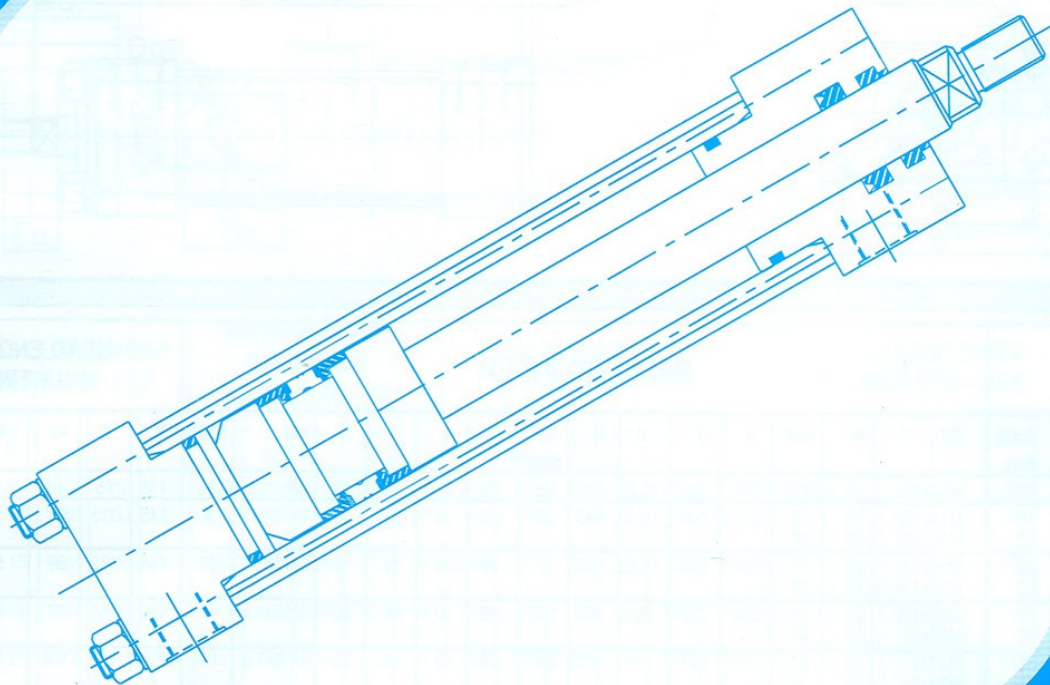
**DEALERS** for entire  
**Bosch Rexroth** range  
of **HYDRAULIC** Products



**PRESSFORM  
INDUSTRIES**

## ***HYDRAULIC CYLINDERS***

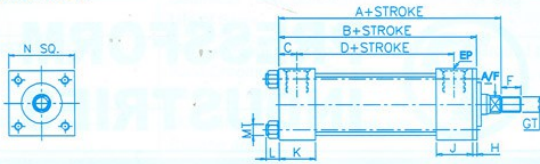
Tie-Rod Construction



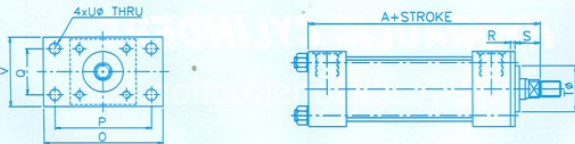
19-B, YADAVALLAR STREET, PATRAVAKKAM, CHENNAI - 600 098.  
PHONE NO. 2624 1789, 2635 9299 FAX NO. 2625 0736  
E-MAIL : PRESFORM@ETH.NET



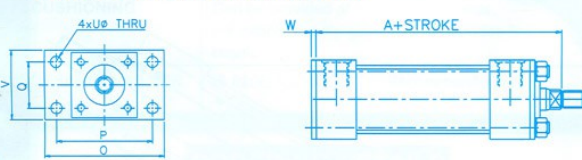
**BASIC CYLINDER**



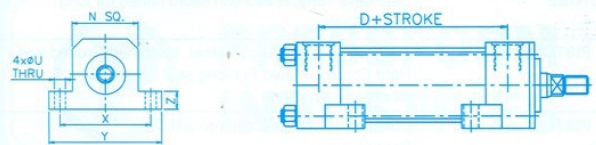
**HEAD END RECTANGULAR FLANGE MOUNTING HRF**



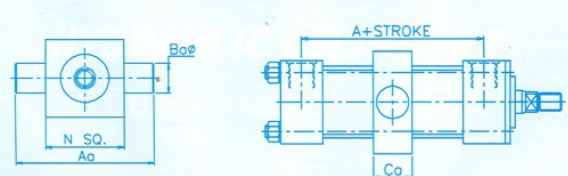
**CAP END RECTANGULAR FLANGE MOUNTING CRF**



**FOOT CUM RANGE MOUNTING FCF**



**INTERMEDIATE TRUNNION MOUNTING - IT**



**CAP END FIXED EYE MOUNTING - CEFE**



BASIC CYLINDER																	HEAD END FLANGE MOUNTING - HRF							CAP END FLANGE MOUNTING - FCF				FOOT CUM FLANGE MOUNTING - FCF				INTERMEDIATE TRUNNION MOUNTING - IT				CAP END FIXED EYE MOUNTING - CEFE				ACCESSORIES ROD EYE - ARE									
Bore Sizeø	RAM Size	GT	F	A/F	A	B	C	D	EP BSP	H	J	K	L	MT	N.SQ	O	P	Q	R	S	T	U	V	W	N SQ	U	X	Y	Z	A	N SQ	Aa	Ba	Ca	A	N SQ	Da	Ea	Fa	Ga	GT	Ha	Ja	Ma	Ea	Ka	La		
40	18	M14x1.5	18	13	236	196	16.5	143	3/8"	20	33	33	12	M8x1.25	65	118	95	46	4	40	40	11	118	95	69	18	65	11	90	112	18	236	65	115	25	30	236	65	14	20	20	38	M14x1.5	37	52	22	30	28	14
50	18	M14x1.5	18	13	236	196	16.5	143	3/8"	20	33	33	15	M12x1.5	80	145	115	68	5	40	44	14	145	115	85	18	80	14	109	132	21	236	80	144	32	38	236	80	20	30	32	60	M14x1.5	48	68	22	30	40	20
63	22	M16x1.5	22	17	236	196	16.5	143	3/4"	20	33	33	15	M12x1.5	95	165	132	69	5	40	50	15	165	132	98	18	95	15	128	165	25	236	95	159	32	38	236	95	20	30	32	80	M16x1.5	55	75	28	30	40	20
80	28	M20x1.5	28	22	280	220	20	160	1/2"	20	40	40	20	M16x1.5	115	190	155	87	5	40	60	18	190	155	118	18	115	18	152	165	30	260	115	167	36	48	260	115	28	40	40	75	M20x1.5	73	98	32	38	56	28
100	38	M27x2	38	30	301	261	20	196	3/4"	25	40	40	20	M16x1.5	138	224	185	109	5	40	70	20	224	185	145	24	138	20	178	212	35	301	138	216	40	52	301	138	38	50	55	100	M27x2	87	123	42	48	72	36
125	45	M33x2	45	38	311	271	20	206	3/4"	25	40	40	25	M22x1.5	165	272	224	132	5	40	85	24	272	224	175	24	165	24	211	250	42	311	165	245	40	52	311	165	45	60	60	110	M33x2	89	134	50	60	90	45
140	56	M42x2	56	46	359	319	30	231	1"	30	58	58	32	M27x2	190	305	255	145	5	40	90	28	305	255	196	24	190	28	245	290	48	359	190	280	45	60	359	190	56	70	65	125	M42x2	111	169	60	70	112	56
160	58	M42x2	56	46	359	319	30	231	1"	30	58	58	32	M27x2	210	325	275	165	5	40	90	28	325	275	216	24	210	28	265	310	52	359	210	310	50	60	359	210	56	70	65	125	M42x2	111	169	60	70	112	56

**CUSHIONING**  
 NC - Non - Cushioned  
 CB - Cushioned at Both Ends  
 CH - Cushioned at Head End  
 CC - Cushioned at Cap End

**NOTE**  
 Special Cylinders to suit Customer's specification up to Bore Size 5000  
 Stroke 1.5mtr.  
 Pressure 250 kg/cm2

All dimensions are in mm

**NOTE:**  
 Due to continuous improvements in Design, we reserve the right to change the specifications without prior notice

<b>TUBE</b>	Seamless Tube, Bored and Micro honed for long Life of Seals.
<b>PISTON RODS</b>	Made of Medium Carbon Steel, Machined, Ground and Hard Chrome Plated For long seal life and for Corrosion resistance.
<b>PISTON</b>	Made of high grade Cast Iron with long Bearing area.
<b>PISTON GUIDE</b>	Made of high grade cast Iron with long bearing area. This houses Wiper Seal also.
<b>SEALS</b>	
<b>PISTON SEAL</b>	Canvas impregnated rubber 'U' Seal.
<b>RAM SEAL</b>	Canvas impregnated rubber chevron 'V' Seal set.
<b>HEAD &amp; CAP END COVERS</b>	Made of Steel Materials. This holds the static 'O' Rings
<b>TIE RODS</b>	Made of medium carbon steel with hexagonal nuts
<b>CUSHIONING</b>	Can be provided at either or both ends. Adjustable needle valve design provides fine cushioning.
<b>DESIGNED AS PER</b>	IS 8208, ISO & CETOP Recommendations

## ORDERING DETAILS

